

Panadapter Switch

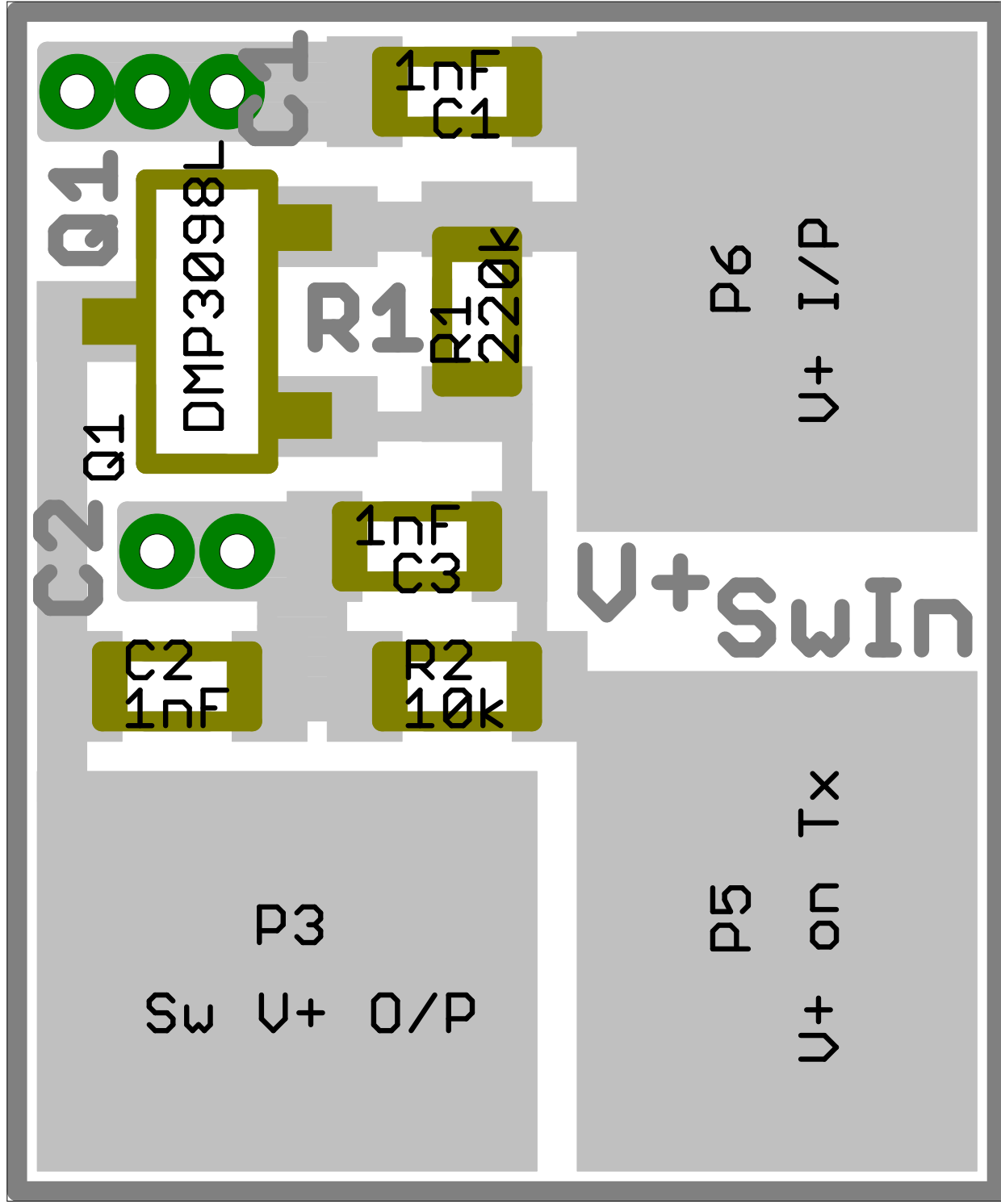
File: V+RxSwV0.0a

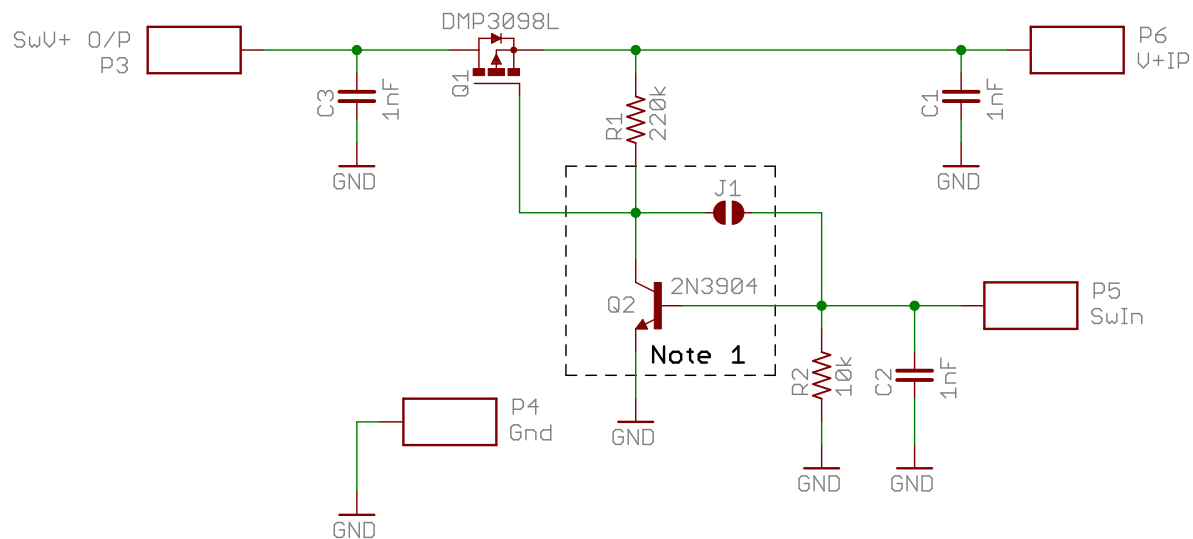
Author: VE3CZ0

REV: V0.0a

Date: 17/02/2014 22:52:45

1/1





Notes

- SwU+ is designed to be on (at U+) during Rx and off during Tx. Configure using J1 & Q2
 If SwIn is at U+I/P during Tx off during Rx - leave J1 open install Q2
 If SwIn is at U+I/P during Rx off during Tx - Short J1 do NOT install Q2

U+ Switch

File: U+Sw V0.0a

Author: UE3C20

REV: V0.0a

Date: not saved!

1/1

